

FOUR FAMILIES

RE-ESTABLISHED 2014



RAMI

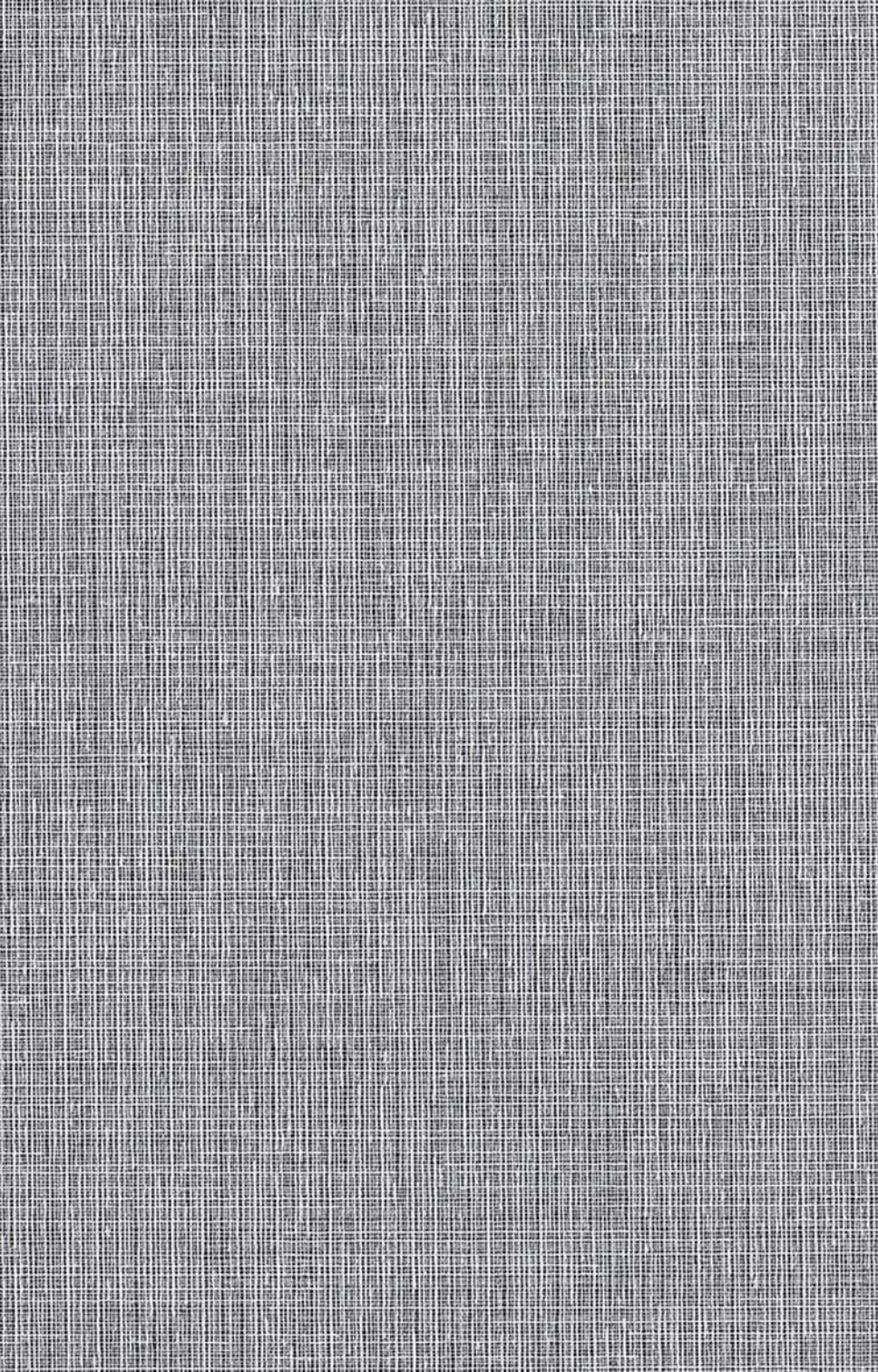
a sheer fabric



FABRIC WIDTH
280 cm

AUSTRALIAN DESIGNED

100%





RAMI

THE STORY

We were founded by four families, who's heritage was in lace making. The natural progression from lace was to weave sheer fabrics. Rami is a textured sheer fabric, with a very regular weave to appear as discreet as possible and filter the natural light nicely. Rami is woven in Europe, which sounds nice doesn't it?

HOW IT'S MADE

COMPOSITION:	<i>100% polyester,</i>
WIDTH:	<i>280cm</i>
ROLL LENGTH:	<i>20 – 25m rolls</i>
WEIGHT:	<i>110gsm +/- 10%</i>

Suitable for roller blinds, roman blinds & panel glides.

PAIRINGS

The Rami design & colours, have been chosen by our design team to complement these Maurice Kain curtain fabrics:



Maurice Kain
COSMOS AQUA



Maurice Kain
PRAVADA VISION



Maurice Kain
LA MESA VISION



Maurice Kain
STARLIGHT AQUA

TAKING CARE

Cleaning your blind fabric is essential, not only to remove surface dust and stains, but it will also increase the longevity of your blinds. Use a feather duster, or a vacuum set on low with an appropriate attachment. Always exercise caution when spot cleaning. Use a clean, lint-free cloth or sponge and dip it in warm water. Dry gently with a clean towel. Always make sure to test any cleaning product on a small, discreet section of the fabric. Chemicals will permanently damage your fabric.

FOUR FAMILIES

RE-ESTABLISHED 2014



ALL THE FOUR FAMILIES FABRICS HAVE A LIGHT FASTNESS SCORE OF AT LEAST 6 ON THE BLUE SCALE (ISO 105-B02: 1994), WHICH ENSURES THAT THE COLOURS WILL STAY VIBRANT FOR MANY YEARS TO COME. COLOURS MAY VARY SLIGHTLY FROM ONE PRODUCTION BATCH TO ANOTHER. VARIATIONS ARE WITHIN INDUSTRY STANDARD (DELTA E READING $1 \leq$). PLEASE ALWAYS CHECK THE COLOUR BEFORE CUTTING.