

FOUR FAMILIES

RE-ESTABLISHED 2014



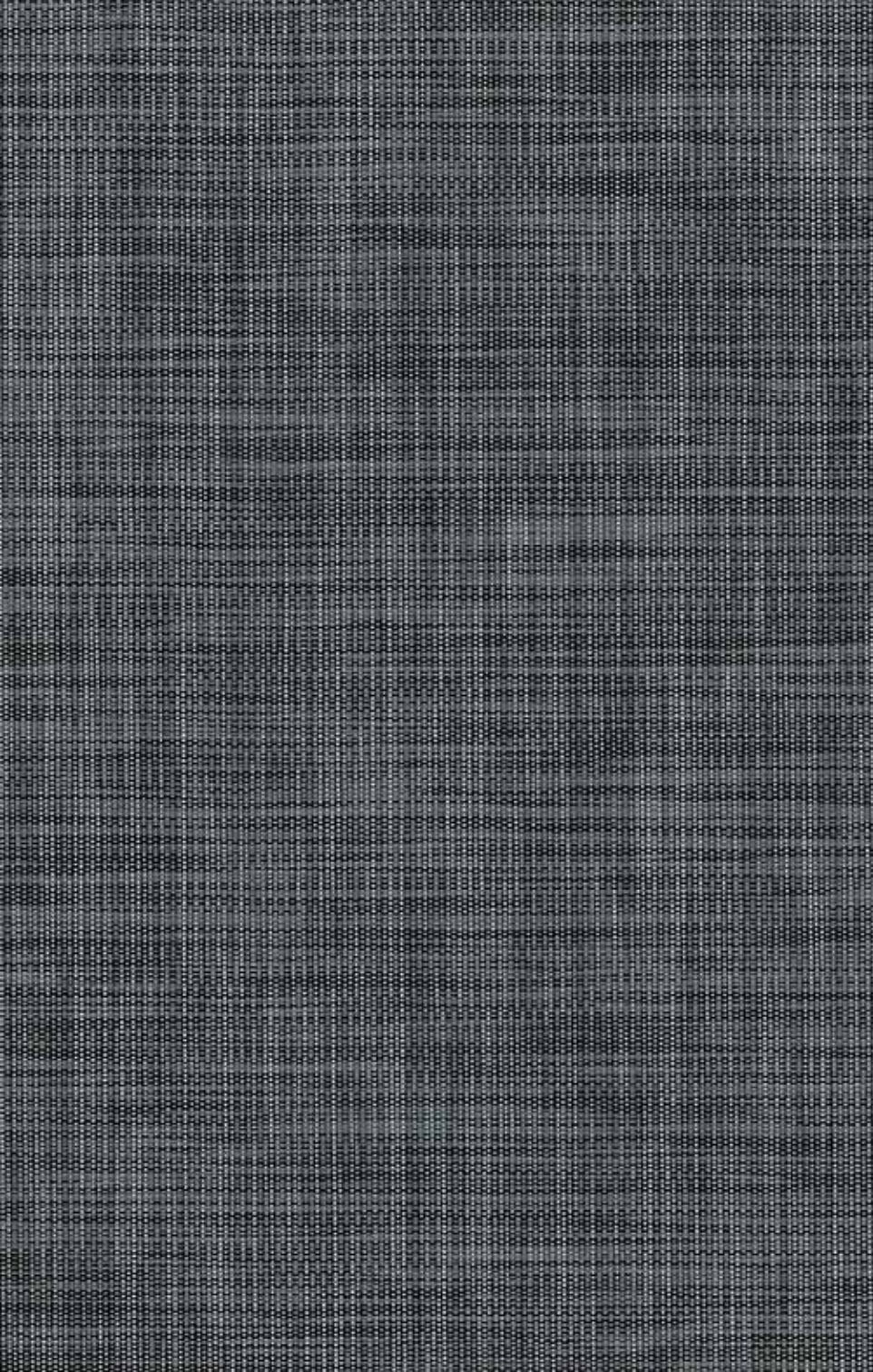
ZARU

a screen fabric

FABRIC WIDTH
300 cm

AUSTRALIAN DESIGNED

100%





ZARU

THE STORY

This one we didn't design ourselves - we have our weaving partner to thank for it. The concept is simple: the minimalist look of screen fabric is not for everyone, but the heat & glare protection it brings is outstanding. Made by putting 2 colours into the coating of the yarn to create a cross-dyed effect, Zaru is a brilliant decorative fabric.

HOW IT'S MADE

COMPOSITION:	<i>30% Polyester / 70% PVC</i>
WIDTH:	<i>300cm</i>
ROLL LENGTH:	<i>22 – 30m rolls</i>
WEIGHT:	<i>410gsm +/- 10% (ISO 2286-2)</i>
THICKNESS:	<i>0.63mm +/- 5% (ISO 2286-3)</i>
OPENNESS FACTOR:	<i>3%</i>
PATTERN:	<i>1x2 Basket weave</i>
FIRE CLASSIFICATION:	<i>FR (NFPA 701-2010)</i>
BREAKING STRENGTH:	<i>Warp 150 daN/5cm, Weft 159 daN/5cm (ISO 1421)</i>

TEAR STRENGTH: *Warp 6.6 daN; Weft 5.8 daN (ISO4674)*

EXTREME LIGHT STABILITY: *2000h ASTM G53-96*

COLOUR FASTNESS TO LIGHT: *8 (ISO 105:B02)*

SPECIAL TREATMENT: *VOC free, Mould resistant (ISO 846)*

Suitable for roller blinds, roman blinds & panel glides.

KATO'S WEAVING ENVIRONMENTAL MANAGEMENT SYSTEM
COMPLIES WITH ISO 14001
OEKOTEX & GREENGUARD CERTIFIED FABRIC

PAIRINGS

The Zaru design and colours have been chosen by our design team to complement these Maurice Kain curtain fabrics:



Maurice Kain
BROOKLYN MOCCACHINO



Maurice Kain
AFFINITY TEMPO

 a division of
basfordbrands

www.fourfamilies.com.au

TAKING CARE

Cleaning your blind fabric is essential, not only to remove surface dust and stains, but it will also increase the longevity of your blinds. Use a feather duster, or a vacuum set on low with an appropriate attachment. Always exercise caution when spot cleaning. Use a clean, lint-free cloth or sponge and dip it in warm water. Dry gently with a clean towel. Always make sure to test any cleaning product on a small, discreet section of the fabric. Chemicals will permanently damage your fabric.

FOUR FAMILIES

RE-ESTABLISHED 2014



ALL THE FOUR FAMILIES FABRICS HAVE A LIGHT FASTNESS SCORE OF AT LEAST 6 ON THE BLUE SCALE (ISO 105-B02: 1994), WHICH ENSURES THAT THE COLOURS WILL STAY VIBRANT FOR MANY YEARS TO COME. COLOURS MAY VARY SLIGHTLY FROM ONE PRODUCTION BATCH TO ANOTHER. VARIATIONS ARE WITHIN INDUSTRY STANDARD (DELTA E READING 1 \leq). PLEASE ALWAYS CHECK THE COLOUR BEFORE CUTTING.